



**POLYMER MODIFIED TILES ADHESIVE
(THE ULTIMATE SOLUTION FOR TILES FIXING)
SUN EPOXY GROUT**



AN ISO 9001:2008 COMPANY

SAINATH INDUSTRIES

17/B, Meldi Estate, Nr. West Cost Pharma, Nr. Gota Circle, Ahmedabad.
E-mail: sainath2011industries@yahoo.com
Visit Us: www.sunconstructionchemical.in
Customer Care: 7990244484

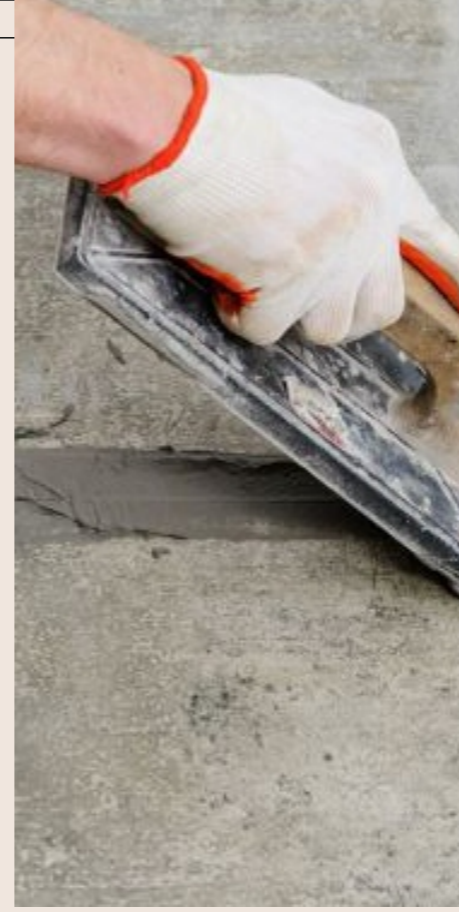
www.sunconstructionchemical.in

SUN CHEMICAL is one of the leading construction chemicals manufactures & suppliers in India and has emerge itself as a most promising construction chemical manufacture in India. The company is having a registered Trademark and an Iso 9001:2015 certified Indian company. The company is having an Ultra Modern Manufacturing unit with well-equipped R&D and high end technology machines. Our Brand "**SUN**" has earned its place as one of the most Trusted and Innovative brand in the market.

are in house tested by our company as per standard parameters specified by Industry. The Company promises maximum satisfaction to the customers for its every product in terms of good quality & service, whether you are designing & building a new structure or renovating an existing one. Quality of products enables us create measurable and meaningful value for our customers and employees.

We strongly believe in adding value to the constructions and to his end users. The company's aim is to become a numero uno in quality of products. Whatever we aspire whatever we do is for the value addition to our users and their satisfaction is our benefit. With such a strong beliefs and a basket full of products company is strongly and successfully moving towards in changing hase of the construction industry.

We aimed to provide complete solutions to the leading construction industry with full range of allied products like Tile Adhesives, Epoxy Tile Grout, Wall Cae Putty, Ready Mix laster, Block Jointing Mortar, Waterproofing Solution Etc. All products



SUN TILE ADHESIVE CODE : IS15477

Multipurpose Polymer Modified Tile Adhesive is a ready mixture to fix tiles on floor as well as on wall. Sun Tile Adhesive is a cementitious dry mix with Adhesive Chemicals.

This Adhesive has an excellent bond to concrete and plastered surfaces. It has non-shrink & self-curing properties. Sun Tile Adhesive is used with Ceramic Tiles, Vitrified Tiles, Glass Tiles, Mosaic Tiles, Marbles, Granites, Artificial Tiles, Artificial Stone and Natural Stones, Granite Frame Cladding on wall etc. and specially made for Tiles on Tiles fixing.

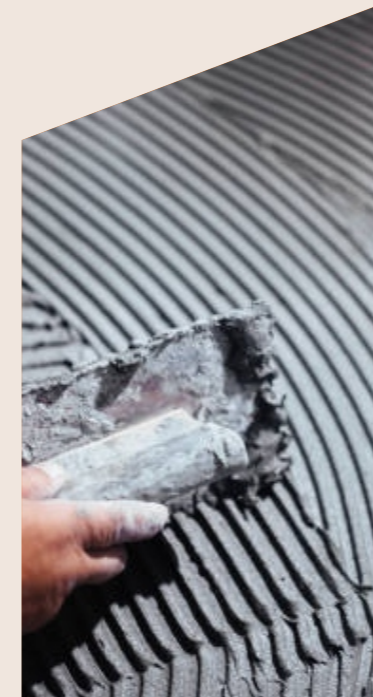
This ready mix material is very easy to use, reduces labour cost, increase the strength and life of tiles on floor as well as on wall. It can be use at Home, Office, Commercial buildings, Malls, Schools, Hospital and it is very effective at Swimming Pool.

This Adhesive requires only water to start application. Mixing Ration in all type of product is 3:1. Gradually add clean water into material and mix well. It uses with minimum 3mm to 5mm layer between tiles to floor. Gently press the tiles on adhesive mixture. Remove excess material from the tile using sponge. Setting time is around 8-10 hours.

Sun Tile Adhesive available with Four different level of material. These are used as per the Softness and Hardness of Tiles as well as of Floor and Wall. All products having different advantage of Adhesive mixture. Adhesive capacity is increases as per Product. It is advisable to concern our technical advisor for selecting a suitable mixture.

Temperature	CURING SPEED		PULL OUT STRENGTH	
	Open Time	Curing Time	Conditions:	
>+40°C	15 minutes	8 hours	At 10 min	0.80 MPa
+20°C - +35°C	30 minutes	14 hours	At 20 min	0.70 MPa
+10°C - +20°C	45 minutes	30 hours	At 30 min	0.60 MPa
+5°C - +10°C	75 minutes	45 hours		

All mixtures are available in 20 Kg packaging.



સન ટાઇલ એડહેસિવ એ એક પોલીમર મોડીફાઇડ ચુકત ટાઇલ એડહેસિવ છે. જે ફ્લોર તથા દિવાલ ની અંદર / બહાર ટાઇલ્સ લગાડવા માટેની આધુનિક પદ્ધતિ નુ મટીરીયલ છે. ટાઇલ્સ પર ટાઇલ્સ લગાવવા માટે આ એક માત્ર સુરક્ષીત પદ્ધતિ છે. સન ટાઇલ એડહેસિવ માં વપરાતુ કેમીકલ તેની ગુણવત્તામાં વધારો કરે છે. સન ટાઇલ એડહેસિવ વધુ બેહતર ચીકાસ સાથેનું હાઇટેક મટીરીયલ છે. મોટી સાઇઝના ટાઇલ્સ લગાવવા માટે ખુબજ જરૂરી છે.

ઉપયોગ : સિરામિક, વિટ્રીફાઇડ, મોષેક, ગ્લાસ તથા તમામ પ્રકારની ટાઇલ્સ તેમજ કોટા સ્ટોન ગ્રેનાઇટ, માર્બલ, ક્યુરટી / બિનક્યુરટી માર્બલ લગાવવા માટે.

પદ્ધતિ : સન મટીરીયલ તથા પાણીને ૩:૧ ના પ્રમાણમાં મીક્સ કરવું. પાણી ધીમે ધીમે ઉમેરી મીક્સ કરતા જવું. ૩mm થી ૫mm ની જાડાઇ સાથે એક બેગ મટીરીયલ થી ૪૦-૫૦ ફુટ કામ મેળવી શકાય. ફ્લોર સપાટીની સ્થિતી કવરેજ માટે મહત્વની છે.

પેકીંગ : ૨૦ કિલો

S- Super /S- Super strong /S- Super Gold
S- Super Platinum /S- White mosaic

VISION

To become the Most Trusted Brand in the Construction Chemical Industry.

MISSION

To be in top Construction Chemical Manufacturing Companies in India

VALUES

Be honest in everything, Fulfill commitments and provide the best quality and services

It takes a lot of passion, determinatin and patience to transform ideas into effective solutions and even more to turn those into products which contributes to success. Our aim was to strike a balance between price and service. Prices that was affordable to the end user without compromising on the quality and services. Our company is committed to customer delight which we have attained through the offering of inmatched quality products and superb services that talk about from our relevant experience and industry much-admired trust.

Responsibility and operational excellence are fully unified. In order to solve indusry's challenges, we recruit the best talent-safely, ethically and responsibly. Our technical capabilities, product quality, and financial strength have uniquely positioned us to compete around industry.



SUN BLOCK FIX MORTAR

In the construction of Masonry walls using precast blocks, a very thin jointing mortar of 3 to 5 mm is required between two blocks, instead of traditional 15 to 20 mm thick mortar. We have developed a polymer modified adhesive sun Block fix Mortar in powder form, that could be used even to thickness 3 mm. Block fix provides a strong and durable bond between two blocks.

Sun Block fix Mortar is used as thin jointing mortar for fixing, laying and jointing AAC Blocks, Cement Blocks, Concrete Blocks, Hollow Blocks, Light Weight Cellular Blocks, Fly Ash Bricks etc. Block fix Mortar is a single Component material requires only water to be added at site. It works economical due to thinner joints. It has high adhesive and compressive strength, Fast setting, Reduce manpower, no wastage of material and economical.



સન બ્લોક બ્લોક ફિક મોર્ટાર એ કન્સ્ટ્રક્શન માટે ની નવી પદ્ધતિ છે. સામાન્ય રીતે વપરાતા સીમેન્ટ, રેતી મટીરીયલમાં કોઈ વધારાનું કેમીકલ ઉમેરાવું નથી જ્યારે સન બ્લોક બ્લોક ફિક મોર્ટારમાં ઉચ્ચ કક્ષાનું વોટર પ્રુફીંગ તથા બોડીંગ કેમીકલનો ઉપયોગ થાય છે. જે કન્સ્ટ્રક્શન ને વધુ સુરક્ષીત અને મજબૂત બનાવે છે.

ઉપયોગ : દરેક પ્રકારની ઇંટો, પથ્થર તેમજ બ્લોકના ચણતરમાં ઉપયોગી છે.

પેકીંગ : ૪૦ કિલો

SUN READY MIX PLASTER

Plastering is the process of covering rough surface of wall, column, ceiling and other arts of the building with thin coat of mrtars to form a smooth, hard and durable surface cappable of rotecting external surface against penetration of rain water and atmosphere. A good plaster needs to have strong adhesion on wall and ceiling with excellent water resistant, crack free and work ability properties that will protect the interior, provide flat base for painting, minimise the inconvenience of maintenance and speed up the construction.

Sun Ready Mix Plaster is ready to use by just mixing water at site. This process eliminates job site mixing practice. Hence it gives consistent quality with required sand mesh sizes in exact proportion which is most important for compactness of plaster Further to have desired workability less rebounding losses required slump properties and overall durability polymers are added in ready mix plaster. Ready mix plaster is the result of extensive product development through in house R & D. Double gradation of sand is done to ensure better product quality. Ready mix plaster is silt free and provides a homogenous mixture due to the automated process.

સન રેડી મીક્સ પ્લાસ્ટર એ પ્લાસ્ટર માટેની આધુનિક પદ્ધતિ છે. સામાન્ય રીતે બનાવતા પ્લાસ્ટર મીક્સમાં કોઈ સપ્રમાણ રહેતું નથી. જ્યારે રેડી મીક્સ પ્લાસ્ટરમાં સીમેન્ટ, રેતી, કેમીકલનું એક સપ્રમાણ મીક્સચર હોય છે. જે પ્લાસ્ટરને એક સરખી મજબૂતી આપે છે.

સપ્રમાણ મીક્સચરના અભાવે દિવાલોમાં એક સરખું લેવલ રાખવામાં તકલીબો થતી હોય છે જે જ્યારે સન રેડી મીક્સ પ્લાસ્ટરમા એક સરખું મીક્સચર હોવાથી દિવાલોની ગુણવત્તા તથા સપાટી સરખી રહે છે.

ઉપયોગ : દરેક પ્રકારની દિવાલોનું સપ્રમાણ પ્લાસ્ટર માટે, દિવાલોની અંદર તથા બહાર બન્ને માટે જરૂરી છે.

પેકીંગ : ૪૦ કિ.ગ્રા.

SUN PREMIUM SBR CODE : Is13182

Sun Premium SBR liquid is specially made for waterproofing, coating and bonding. This water proofing solution is used on all type of cementitious surfaces and as a bonding agent for cement work. It provides a cooling effect if it is applied on cement surface at roof. This is also used as a crack filling master.

Sun Premium SBR highly use at Bathroom Sunk Area, Basement Area, Roof and Overhead Slab, Underground Water Tank and it is very effective and strongly recommended for Water Proofing of Swimming Pool.

It is advisable to clean dust and grease from the application area before apply, avoid direct sunlight while aplying. Mix SBR liquid thoroughly with water & cement and apply with brush for easy application.

Packaging :
1 Litre, 5 Litre, 10 Litre & 20 Litre



સન પ્રીમીયમ એસ.બી.આર. એ એક સચોટ વોટરપ્રુફીંગ સોલ્યુશન છે. આ એક સફેદ કલરનું રબ્બર પોલીમરથી બનેલ છે. જે સરફેસની પક્કડ વધારવા તથા વોટરપ્રુફીંગ કરવા માટે જરૂરી છે. SBR નાં ઉપયોગથી સ્લેબ તથા પ્લાસ્ટરની તાકાત વધે છે. અને તિરાડો પડતી નથી.

ઉપયોગ : છત, બાથરૂમ, શંખસ્લેબ, સ્લેબ, પ્લાસ્ટર તેમજ જુના કન્સ્ટ્રક્શનમાં વોટરપ્રુફીંગ તથા લીકેજ રીપેરીંગ માટે
પેકીંગ : ૧ લી., ૫ લી., ૧૦ લી., તથા ૨૦ લી.

SUN LWR +

Sun LWR+ is used for waterproofing of concrete and mortar use in RCC columns, beams, basement, roof slabs, water tanks and water retaining structures. Also used in external plastering, bathroom, balcony and drains.

Sun LWR+ benefits in concrete mixture and resist corrosion of steel. It increases workability of plaster and also increases strength and durability of both plaster and concrete.

The recommended method of Sun LWR+ should be mixed into the gauging water while preparing concrete mixture. Add 200ml Sun LWR+ for every 50kg cement bag in concrete and plaster mixture. Maintain water/cement ratio as low as possible for higher durability.



LWR+ એક વોટર પ્રુફીંગ કેમીકલ છે. LWR+ દરેક પ્રકાર નો કોંક્રીટ મિક્સચર અથવા પ્લાસ્ટર મિક્સમાં ઉમેરી શકાય છે. LWR+ દરેક પ્રકારના સ્લેબ, ચણતર તથા પ્લાસ્ટરનો ઉપયોગ થાય છે.

છત સ્લેબ, બેઝમેન્ટ, વોટર ટેક, બાથરૂમ, બાલકની રૂઝ, ડ્રઇન એરિયામાં LWR+ નો ઉપયોગ કરવાથી વધુ સારું રક્ષણ મળે છે.

સ્લેબ તથા કોંક્રીટમાં ઉપયોગ કરવાથી સારું બોર્ડિંગ મળે છે. તેમજ અંદરના લોપ્પડને પણ સારું રક્ષણ મળે છે, પ્લાસ્ટર ના કામ માં વધુ સારું મજબૂતી તથા વધુ સારી એવરેજ મળે છે.

SUN RESIN & HARDNER

Epoxy Resin comes in two parts: a resin and a hardener. Mixing the resin and hardener together prompts a chemical reaction, transforming them from a liquid into a solid. Measuring accurately and mixing thoroughly is essential to making sure your epoxy resin cures properly. Resin is a high-gloss epoxy resin specifically designed to give artwork and creative projects a crystal clear finish. It's an easy-to-use 1:1 ratio epoxy resin, meaning it requires equal amounts of both resin and hardener, measured by volume.

Sun Epoxy Resing and Hardner are mostly used to joint two different Tiles, Granite, Marble etc. It gives a best performance by adding with Sun Tiles Adhesive for door and window cladding.



SUN CEMENT BASE TILES JOINT FILLER

Sun Cement Base Grout is a White cement base colour grout. It is a perfect bonding material for ceramic and vitrified tiles joint on floor or wall. It is also non shrinkable and crack proof. Easy to spread and easy to clean. There are so many colour options are available in cement base grout and it is also available as per the specific tiles colour tone.

Cement base joint filler Grout : 500 g, 1 Kg & 10Kg.

SUN EPOXY BASE GROUT

Sun Epoxy Grout is very useful product for tiles joints on floor and on wall. This product is having a very long life with non shrinkable and crack proof. It is also having a stain and bacteria resistance. This is very important and recommended usage where hygiene is necessity like Hospital, Bathroom, Laboratories, Kitchen, Swimming Pool, Entry For etc. because it is an anti bacterial and anti fungal material.

Epoxy Grout available in two part and three art component, easy to mix and easy to clean. There are so many colour options are available in Epoxy Grout and it is also available unique Sparkling and Glittering Colours.

It is advisable to please refer our Regular & Sparkling colour shade card for verity of colour options.
Epoxy Grout : 1 Kg. & 5 Kg.



સન ઇપોક્સી ગ્રાઉટ મટીરીયલ બે ટાઇલ્સ વચ્ચેના સાંધા પુરવા માટે વપરાય છે. ટાઇલ્સ વચ્ચેનું બોર્ડિંગ એક મહત્વની બાબત છે. જે ટાઇલ્સને સુરક્ષીત તથા મજબુત બનાવે છે. સન ઇપોક્સી ગ્રાઉટમાં વોટર પ્રુફિંગ સોલ્યુશન નો સમાવેશ પણ કરેલો છે. હાલની આધુનિક પધ્ધતિ મુજબ બે ટાઇલ્સ વચ્ચે ઇપોક્સી એક મહત્વ બાબત છે કારણ કે અવનવા કલર તથા જરીયુક્ત કલર ફ્લોરીંગને એક રીય લુક આપે છે.

ઉપયોગ : બે ટાઇલ્સ વચ્ચેનાં સાંધા પુરવા માટે તેમજ બે ટાઇલ્સ વચ્ચે પ્રેસર બોઇન્ટ દ્વારા વિવિધ કલર સાથે બોઇન્ટ ભરવા તેમજ ફ્લોરીંગની સુંદરતા વધારવા માટે. બે અને ત્રણ પાર્ટમાં આવતું મટીરીયલ જરૂરીયાત મુજબ બેળવી વપરાય છે.

પેકીંગ : ૧ કિલો તથા ૫ કિલો

OTHER RANGE OF PRODUCTS

Water Proofing Membrane, Crack Feeler, Wood Adhesive, PVC Solution, Floor Hardner Etc.

TILE EPOXY GROUT COLOURS SHADES

TILE EPOXY GROUT COLOURS SHADES

WHITE	LEMON YELLOW
LIGHT GREY	BEIGE
DARK GREY	LAVA CREAM
CREAM STONE	ORANGY CREAM
MYSTIC	SAND STONE
GREY	GOLD
PURPLE GREY	JAISALMER
MYSTIC GREY	TERRACOTTA
GRAPHITE	MARS
BLACK	SWEET PINK
PISTA	RED PINK
SKY BLUE	PEACH
STEEL GREY	FABLE LIGHT
PURPLE ASH	FABLE DARK
BRIGHT BLUE	CREAM CARBOLO
JASMIN BLUE	ORANGE CARBOLO
MINT	CHENILLE RED
PALEYELLOW	CHENILLE BROWN
YELLOW GREEN	FALSA
LIGHT GREEN	BROWN
SLEEK GREEN	DARK BROWN
OLIVE	CYAN
VALENTINO GREEN	YELLOW
BOTTLE GREEN	PURPLE
IVORY	BABY PINK

SPARKLE EPOXYGROUT COLOURS SHADES

SILVER

GOLD

WHITE	IVORY
JAISALMER	TERRACOTTA
BROWN	BROWN
GOLD	COPPER
COFFEE BROWN	COFFEE BROWN
STEEL GREY	GREY
BLUE	BLUE
DARK GREEN	DARK GREEN
AQUA BLUE	AQUA BLUE
BURGUNDY	PURPLE
DARK GREY	DARK GREY
OLIVE	ORANGE
CRUST	CRUST
PLATINUM GREY	BABY PINK
PISTA GREEN	SAND STONE
BLACK	BLACK