

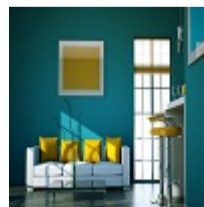


Welcome to Sun Polymer Modified Tiles Adhesive



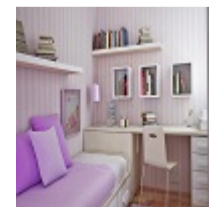
White Mosaic Adhesive

White Mosaic Adhesive or Grey (Industrial Adhesive) cement - based, highly polymer modified, high strength, flexible tile



Wall Putty

Walplast wall putty is specially developed as a finishing coat to cover unevenness and pinholes in plastered surfaces and to



Acrylic Wall Putty

We are actively involved in the fabrication of superlative quality Acrylic Wall Putty. Our Wall Putty is popularly called as Snow

adhesive for fixing vitrified tiles and glass mosaics in interior and exterior situations. Suitable for walls and floors.

[Read More](#) >

make the walls/ceilings ready for painting, as it is white, it can be treated as a base coat for painting.

[Read More](#) >

White Premium Wall Putty. The raw materials, which we use, ensure the high durability of our products.

[Read More](#) >



Tiles Care Grouted

Tiles Care Grouted is the material used to fill the spaces between the individual tiles. Grout comes in many colors. While color is important to the final finished look of the tile installation, it has little effect on the functionality of the grout.

[Read More](#) >

↓ [Download Brochure](#)

[Quote](#)

[About](#)

Please fill out the request for quote form below and our expert team will get back to you shortly.



Your Name:*



Your email-id:*



Your Number:*



Your Message:*

[Send Request](#)

Products Features

1

White Mosaic Adhesive

- Grey - Industrial Adhesive
- White - Glass Mosaic Adhesive
- Highly polymer modified
- High strength
- Flexible tile adhesive
- For interior and exterior situations
- Non-slip and water-resistance

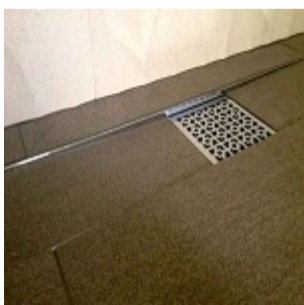
2

Wall Putty

- Highly water resistant
- Strong bonding to the base plaster
- Smooth finish
- Excellent workability
- UV Resistance

Details

[Tiles Epoxy](#)



Tiles Epoxy has become more and more popular among tile contractors and builders. I find new benefits every time I use this product. Unlike cement grout, which is made from a cementitious powder mix, epoxy grout is made from epoxy resins and a filler powder. The grout is extremely durable and almost completely stainproof. Regular grout isn't waterproof, so unlike epoxy grout, it can absorb water when it's wet and stain easily. If you're tired of scrubbing the gunk off your grout, epoxy grout could be your solution.

[Water Proofing Liquid](#)

Tiles Care Grouted



Have a question? call us now

90990 78439

[Contact Us](#)



Need support? Drop us an email

info@sunconstructionchemical.in
sainath2011industries@yahoo.com

[Fill Our Form](#)



We are open on

Mon - Sunday 07:00 AM - 08:00 PM

[View More](#)



Sainath Industries is a part of Service and Long Business. Our Motto is Long Life Relation With our Customer and User. The "SUN" Brand Tiles Fixing Adhesive is Inspired to Our Good Wisher

90990 78439

info@sunconstructionchemical.in
sainath2011industries@yahoo.com

17/B, Meldi Estate, Nr. Gota Ahmedabad



Our Services

- [Oil & Gas Engineering](#)
- [Manufacturing](#)
- [Chemical Research](#)
- [Auto Motive](#)
- [Agricultural](#)
- [Mechanical](#)

Products:

- White Mosaic Adhesive
- Wall Putty

Maps



- Acrylic Wall Putty
- Tiles Care Grouted

Powered by : [Business7days](#)

2019 © Copyright Sun Polymer Modified Tiles Adhesive | All Right Reserved